

New Finishes Offer

JANUARY 2021

NowyStyl



New fabrics and meshes

Rivet by Camira

Fabric is 100% obtained from recycled used plastic bottles (100% REPREVE® Recycled Polyester).

Rivet's texture resembles a combination of woolen suits with sportswear.

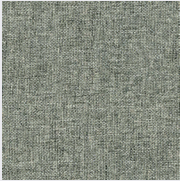
Melange upholstery in subdued colors is perfect for chairs and armchairs.



Rivet by Camira

Rivet is available in 17 colours,
in price group 2.

EGL 01



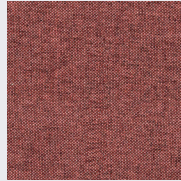
EGL 05



EGL 14



EGL 12



EGL 13



EGL 32



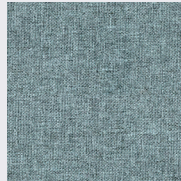
EGL 15



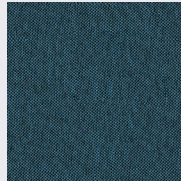
EGL 34



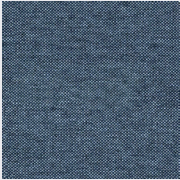
EGL 16



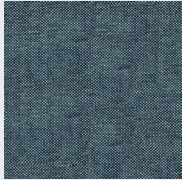
EGL 35



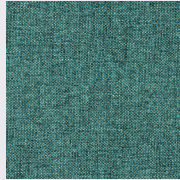
EGL 24



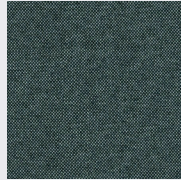
EGL 27



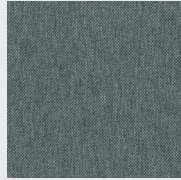
EGL 21



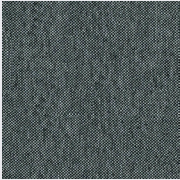
EGL 37



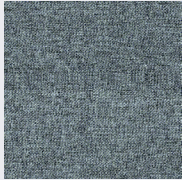
EGL 26



EGL 50



EGL 20



Remix 3 by Kvadrat

Woolen upholstery designed
by Giulio Ridolfo.

From distance Remix 3 looks like
single-colour but when you look closely
ypu can see two melange colours
of threads consisting of three shades.

The new Remix 3 colours were created
on the basis of traditional indigo dyeing.



Remix 3 by Kvadrat

18 colours of Remix 3 are available
in price group 5.

Other 54 colours are available
in S2 standard.

RX 242



RX 612



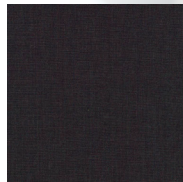
RX 452



RX 662



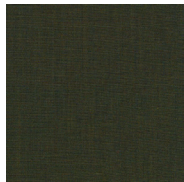
RX 362



RX 933



RX 842



RX 982



RX 716



RX 743



RX 123



RX 143



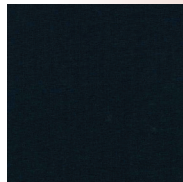
RX 173



RX 866



RX 873



RX 163



RX 196



RX 606

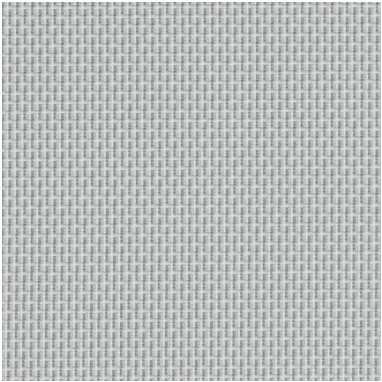


New meshes

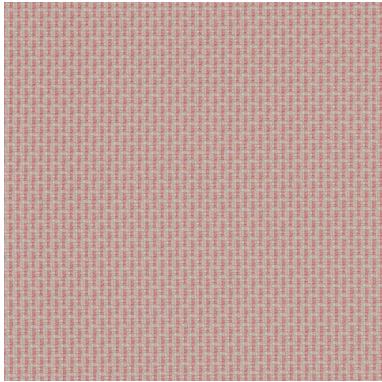
New meshes for Souly – office chair that will be in the offer in January 2021.

Vivid by Gabriel - 2 colours:

MV1001 Light grey



MV1501 Pink

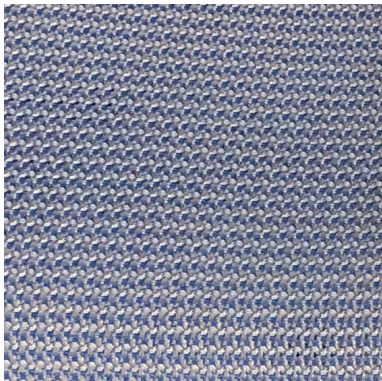


R246 by Cima – 3 colours:

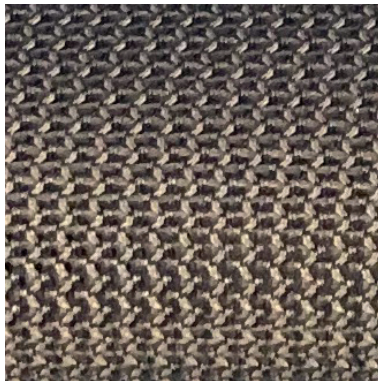
MC009 Black



MCL026 Blue grey



MCJ879 Grey



Fenix NTM laminate



Fenix NTM laminate

Fenix NTM features:

- extremely matt, soft touch surface
- structure that makes fingerprints invisible
- very easy to clean with a moist soft cloth

The most important feature that distinguishes Fenix NTM from regular laminates is the ability to repair shallow scratches.

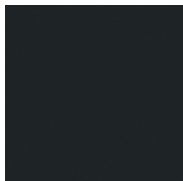
Fenix NTM laminate will be available for furniture designed for spaces used by a large number of people, such as meeting rooms or canteens, as well as for selected electric height adjustable tables that are often used as hot desks.

Line for which Fenix NTM laminate is available:

- Tauko tables
- MeeThink Y
- CS5040 (conference tables and hight meeting tables)
- Convenio (base type „Y”, rectangular tops)
- Levitate (conference tables and hight meeting tables)
- eModel 2.0 (rectangular tops)
- XIO 2.0 (rectangular tops)

Fenix NTM is available in 6 colours:

Nero Ingo KJ



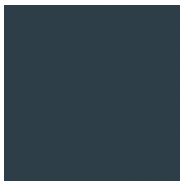
Grigio Antrim KM



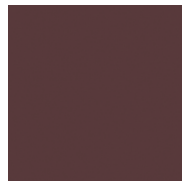
Grigio Bromo KN



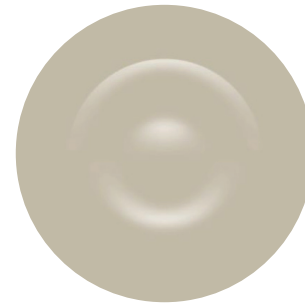
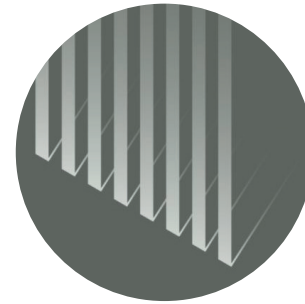
Blu Fes KO



Rosso Jaipur KP



Verde Comodoro KR



Melamines



NK Cashmere

MK Light Grey Concrete

Well known melamines:

NK Cashmere and MK Light Grey Concrete will be available for a wider range of products.

MK Light Gray Concrete: fronts of wardrobes and containers (Play&Work, CS5040, SQart, Puzlo, Easy Space, Tinto)

NK Cashmere: desk and table tops, fronts and modesty panels (eModel 2.0, Play&Work, CS5040, Levitate, SQart, Puzlo, Flib, Xio 2.0, eUP, Tauko, Hexa, Hexa wall)

Extension of feasibility concerns selected furniture lines and their elements depending on the melamine board thickness.



ML Kaisersberg Oak

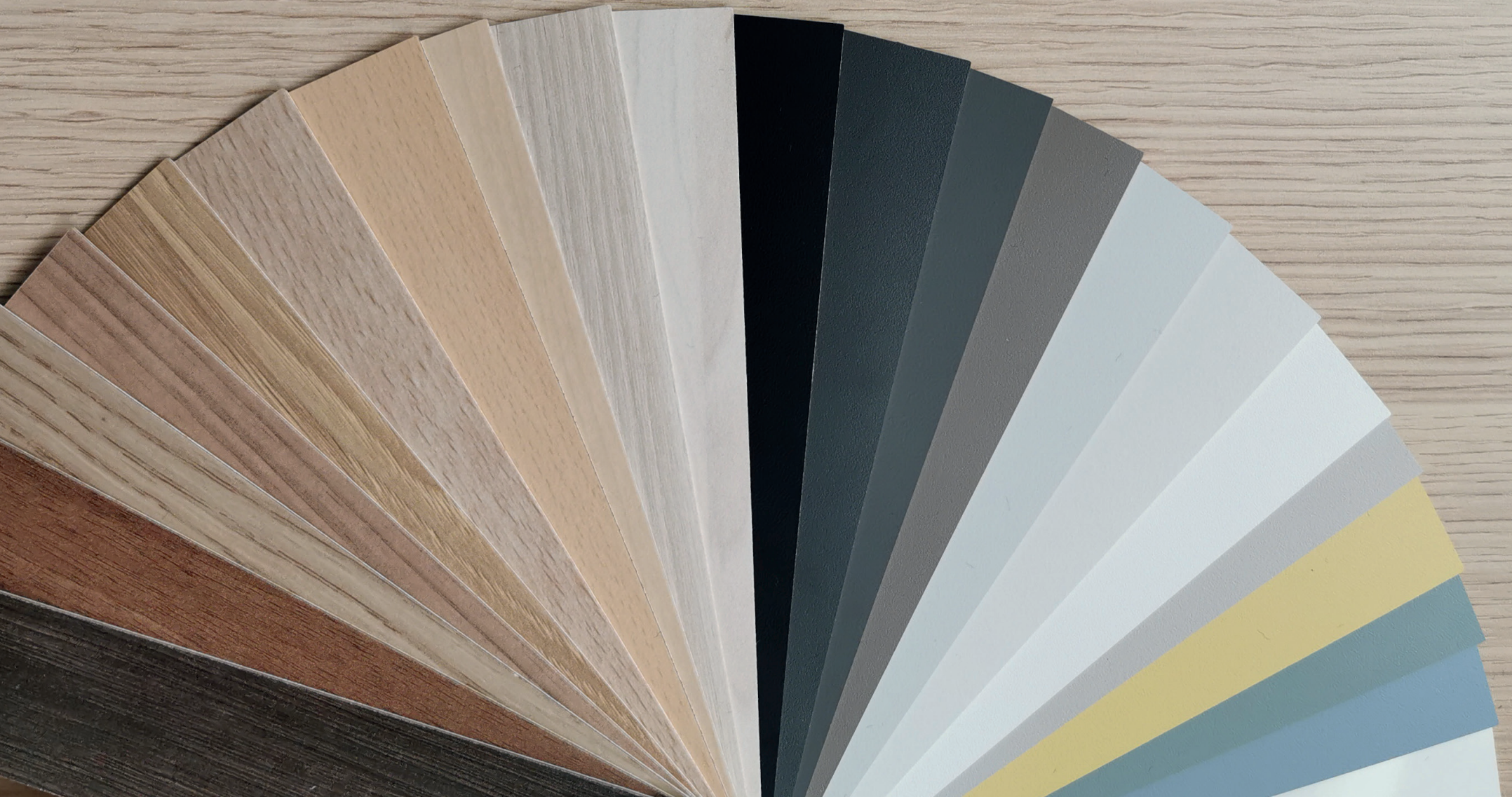
A new melamine with a smooth structure which perfectly imitates natural oak wood.

Neutral, classic color, perfect for office furniture, available for most furniture systems.

ML Kaisersberg Oak



NA Aragon Oak



New metal colours

Fashion Collection

The Fashion Collection is created
by the finishes that follow current trends.

It includes three colours of metal:

- Cashmere NCS S 2005-Y60
- RAL 5008 Grey blue
- RAL 6012 Black green

They will be available at no extra charge,
on a wide range of products, for soft seating,
furniture and accessories.



NCS S 2005-Y60 Cashmere NK

Cashmere colour is available both for metal and melamine so it's possible to gain a monolook.

Cashmere is a warm beige with hint of pink. It becomes more popular than light grey and goes great with wooden decors.

It makes a smart background for more intensive colour accents.



RAL 5008 Grey blue

RAL 5008 Grey blue is a navy blue tone which is versatile, elegant, calm and in some cases may replace classic black.

Blue and navy blue are most popular colours in office spaces because they are described as „business colours”.

Please note that RAL 5008 is not exactly the same tone as Fenix NTM Blue Fes.



RAL 6012 Black green

RAL 6012 Black green is a classic bottle green that makes every piece of furniture more noble and emphasises colour of a used fabric.

Dark green is the second most frequently used color in the offices.

This colour fits to Fjord Green melamin and wooden finishes. Please note, RAL 6012 is not exactly the same tone as Fenix NTM Verde Comodoro.



Gloss and matt

In recent years, matt finishes have been gaining popularity. This trend can be observed not only in furniture, but also in automotive industry. Brands of premium segment started to offer a matt varnish, instead of the traditional glossy one.

Nowy Styl follows this trend because matt finishes look more elegant, hence the Fenix NTM has been added to the offer, and now most of the glossy powder coatings for metal will be replaced with matt with a texture.



Finishes catalogue

Complex information about finishes, especially full range of colours and technical parameters, will be included in Finishes catalogue that is expected to be released in January 2021.

